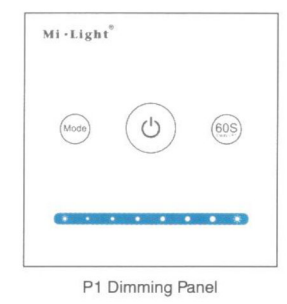


Mi·Light® User Instruction

I . P Series



P1 Dimming Panel



P2 CCT Panel



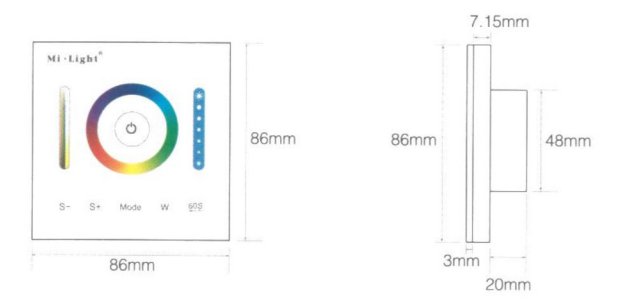
P3 RGB / RGBW / RGB+CCT Panel

Smart Panel Controller Model No.: P1 / P2 / P3

II . Introduction

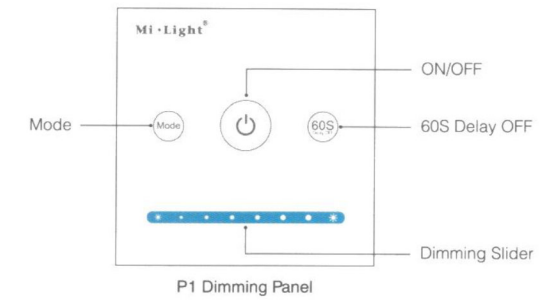
Smart Panel Controller is a newly high-end controller. The appearance is made of a pretty and fashionable glass panels. And we adopt a high precision Capacitive touch screen IC.Touch Screen is very stable. Also it has memory function (Turn off the light, then turn on again, The lamps will keep the same light as before). This controller widely work on Single Color, CCT, RGB, RGBW and RGB+CCT LED strip. Also work on Flexible strip, Panel light, Rolling strip. Easily install and operate.

III . Technical Parameters



Working Temperature	-20 -60 C
Working Voltage	DC12V-24V
Output Max	5A/Channel
Total Output Max	15A
Output Connection	Common anode
Panel Size	L86mm*W86mm
Packing Size	111mm*111mm*38mm
Net weight	122g
Gross weight	177g

IV . Product Function



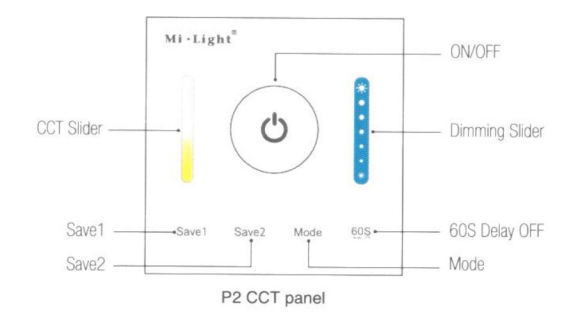
P1 Button Function

ON / OFF Switching When the light is ON, Indicating lamp will not light, when the light is OFF, Indicating lamp will light.

60S Delay OFF When the light is ON, Press "60S", the light will be off Automatically after 60 seconds.

Mode Press Mode shortly, Switch to next mode. 9 modes switching. Long press "Mode", switch to white light mode.

Dimming Slider Touch Dimming Slider to change the brightness from 0.1~100%.



P2 Button Function

ON / OFF Switching When the light is ON, Indicating lamp will not light, when the light is OFF, Indicating lamp will light.

60S Delay OFF When the light is ON, press "60S", the light will be off Automatically after 60 seconds.

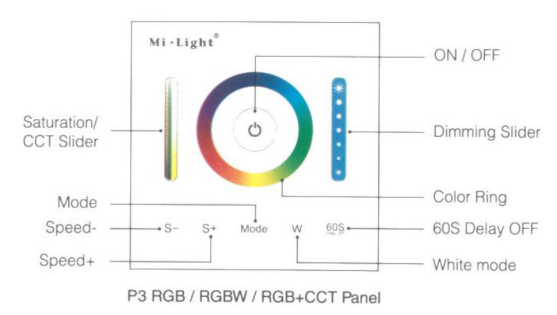
Mode Press Mode shortly, Switch to next mode; 9 modes switching. Long press "Mode", Switch to white light mode.

Dimming Slider Touch Dimming Slider to change the brightness from 0.1~100%.

CCT Slider Touch CCT Slider, change the Color Temperature from 2700-6500K.

Save1 Press "Save1" shortly, select Save1 mode; Long press "Save1", Save present mode to Save1.

Save2 Press "Save2" shortly, select Save2 mode; Long press "Save2", Save present mode to Save2.



P3 Function

This controller is compatible with RGB, RGBW and RGB+CCT version. It will be RGBW Version when you get it first time.

I . Method of Switching RGB, RGBW and RGB+CCT version

- When the Light is OFF, Long press "Mode" and "W" button at the same time, The controller will sound 3 times after 5seconds, then it change to RGB version.
- When the Light is OFF, Long press "W" and "60S" button at the same time, The controller will sound 4 times after 5seconds, then it change to RGBW version.
- When the Light is OFF, Long press "Mode" and "60S" button at the same time, The controller will sound 5 times after 5seconds, then it change to RGB+CCT version.

II . Button Function

ON / OFF Switching When the light is ON, Indicating lamp will not light, when the light is OFF, Indicating lamp will light.

W Press "W", Switch to Static White Light mode.

60S Delay OFF When the light is ON, press "60S", the light will be off Automatically after 60 seconds.

Color Ring Touch Color Ring, Choose the color you want.

Dimming Slider Touch Dimming Slider to change the brightness from 0.1~100%.

Saturation/CCT Slider Each modes have their own brightness value and saturation value (Static white light mode and dynamic white light gradual changing mode have no saturation) Function see details for P3 sheet.

Mode Press "Mode" shortly, Switch to next mode; Long press "Mode", Switch the Modes circularly, there are 12 kind modes (PS, on the color light, press Mode, it will get to first mode). In the version of RGB+CCT, White gradual changing mode means CCT gradual changing under static white mode.

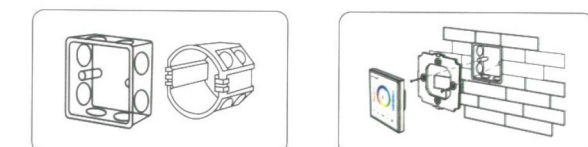
S- Slow the speed on present dynamic mode. There is 9 class speed. Long press "S-", Slow the speed continuously. When it get to slowest speed, S- will be invalid. (Dynamic mode see details for P3 mode sheet.)

S+ Accelerate the speed on present dynamic mode. There is 9 class speed. Long press "S+", Accelerate the speed continuously. When it get to fastest speed, S+ will be invalid. (Dynamic mode see details for P3 mode sheet.)

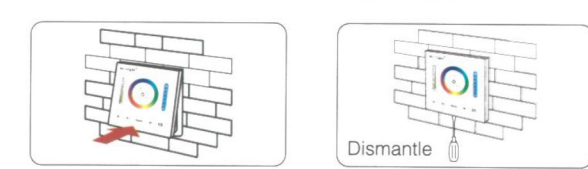
V . P1 / P2 / P3 Mode sheet

Model No.	State	Number	Mode	Adjustable Saturation / CCT Function	Adjustable Brightness (0.1%-100%)	Adjustable Speed
P1 P2	Dynamic Mode	1	Gradual Change fast	✗	✓	✗
		2	Gradual Change in middle speed			
		3	Gradual Change Slowly			
		4	Jump to Change Fast			
		5	Jump to Change in middle speed			
		6	Jump to Change slowly			
		7	Blinks fast			
		8	Blinks in middle speed			
		9	Blinks slowly			
P3	Static Mode	Color Ring	Color mode	Change Saturation ● Adjust CCT on RGB and RGB+CCT version ● Adjust Brightness on RGBW Version	✓	✗
		W Button	White light mode			
		1	Red light mode			
		2	Green light mode			
	Dynamic Mode	3	Blue light mode	Adjust Brightness	✓	✓
		4	All colors gradual change			
		5	White light gradual change			
		6	Red/green/blue color gradual change			
		7	Seven color jump to change			
		8	Jump to change randomly			
		9	Red Gradual Change + Jump to change 3 times			
		10	Green Gradual Change + Jump to change 3 times			
11	Blue Gradual Change + Jump to change 3 times					
12	Demonstration mode (Dynamic mode change circularly)	Change Saturation	✓	✓		

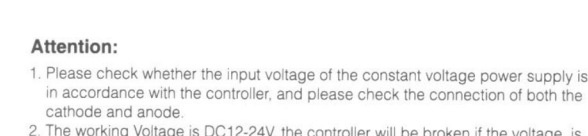
VI . Installation / Dismantlement



Install the bottom case into the wall; Above are the standard bottom cases.



Clicks into the upper side of glass panel on the controller base, then press the lower side slightly to make it clicks into the controller base.



Plug into the below bayonet with a screwdriver, and upward screwdriver, then you can dismantle the controller.

Attention:

- Please check whether the input voltage of the constant voltage power supply is in accordance with the controller, and please check the connection of both the cathode and anode.
- The working Voltage is DC12-24V, the controller will be broken if the voltage is higher than 12-24V.
- When Installation, pls handle with care to avoid the broken of the glass panel.

